

1

FRANCE



The Louvre art museum, situated in Paris, has on average, **10.3 million visitors a year.** The Louvre is home to the world-famous 'Mona Lisa' painting by Leonardo da Vinci.



★ GLOBAL RUGBY QUESTION ★

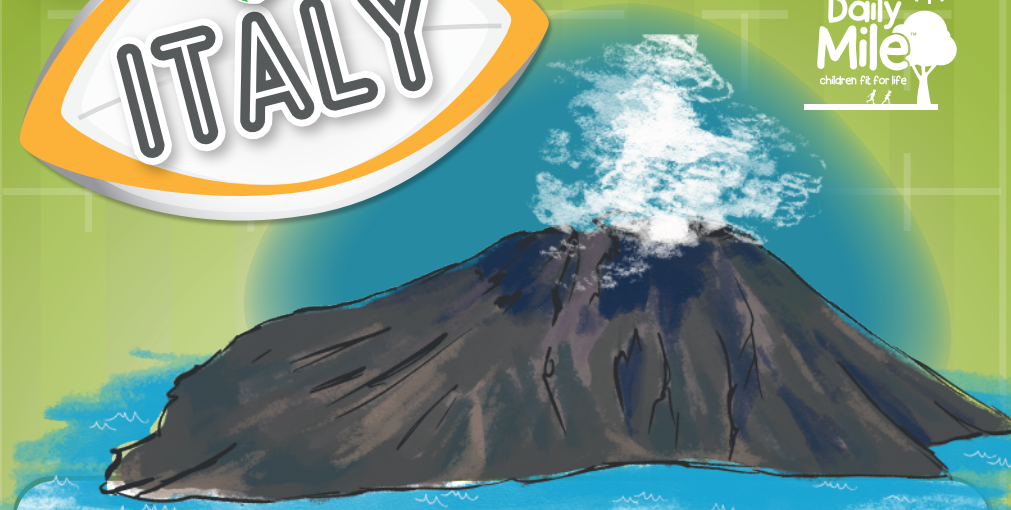
Because of the colour of their jerseys, what name is the French national team also known as?



A

2

ITALY



Italy has **3 active volcanoes!** It is one of the only countries in Europe that has active volcanoes within it. Vesuvius erupted in 79 A.D., flattening the ancient Roman city Pompeii.

★ GLOBAL RUGBY QUESTION ★

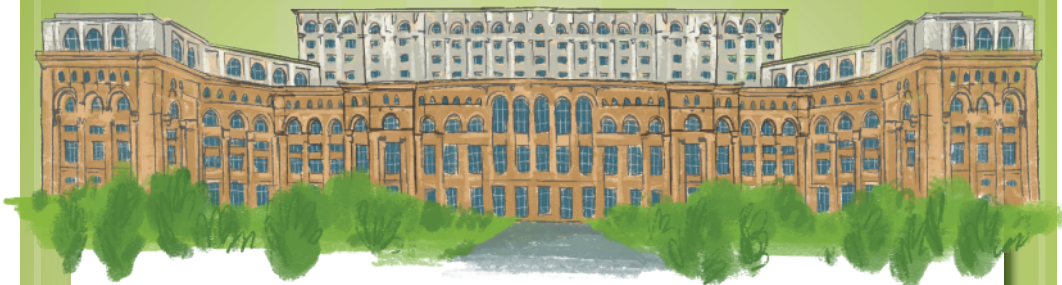
What two nicknames are given to the Italian national rugby team?



A

3

ROMANIA



The Parliament Palace in the capital of Romania, Bucharest, is the **heaviest building in the world**.

★ GLOBAL RUGBY QUESTION ★

What nickname is given to the Romanian national rugby team?



4

ENGLAND



The **largest library in the world** is situated in London, England, and it contains over **160 million books and manuscripts**.

★ GLOBAL RUGBY QUESTION ★

Where does the England national rugby team play their home games?



5

SCOTLAND



Scotland has **over 700 islands**, which include groups called Orkney, Shetland and the Hebrides.

The **national animal** of Scotland is a **unicorn!**

GLOBAL RUGBY QUESTION

Who is the most capped rugby player for Scotland?



A

6

IRELAND



Ireland is the only country in the world to have a musical instrument as its **national symbol** which is the **harp**.

GLOBAL RUGBY QUESTION

What are the four provincial rugby teams in Ireland called?



A

7

WALES



Wales has **more castles** than any other country in the world.



★ GLOBAL RUGBY QUESTION ★

Where does the Welsh national rugby team play their home games?

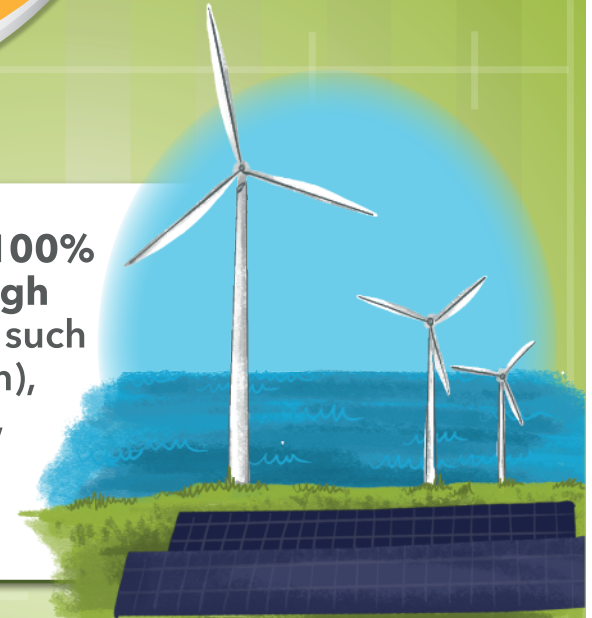
A

8

PORTUGAL



Portugal generates **100%** of it's energy through **renewable sources**, such as solar (from the sun), hydro (from the sea), and wind (by using wind turbines).



★ GLOBAL RUGBY QUESTION ★

The Portugal national rugby team is nicknamed Os Lobos after what animal?

A

9



Chile is the longest country in the world from north to south at 2,653 miles.



★  GLOBAL RUGBY QUESTION  ★

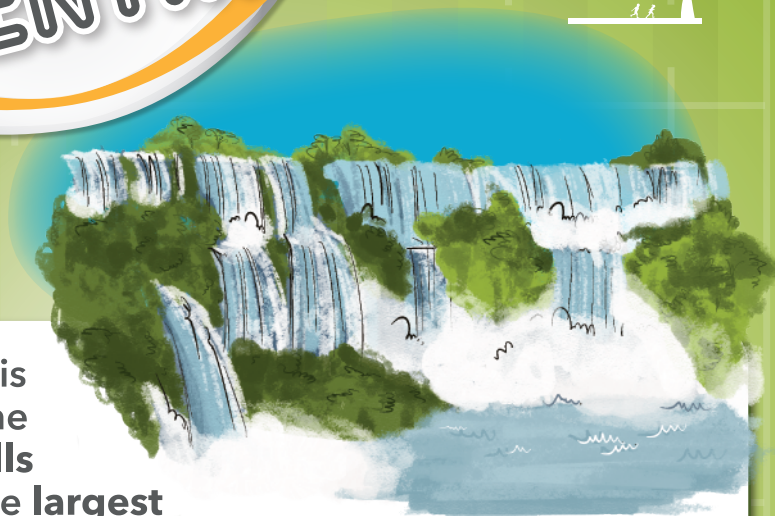
'Los Condores' is the nickname of the Chilean rugby team and is a symbol of strength, power and freedom. Can you research what type of animal a Condores is?



10



Argentina is home to the Iguazu Falls which is the largest broken waterfall in the World, with a total of 275 individual waterfalls spread over 2 miles on the Iguazu river.



★  GLOBAL RUGBY QUESTION  ★

Who was the most famous player in Argentinian history? Need a clue? He was nicknamed 'El Mago' (the magician')



11

URUGUAY



Uruguay hosts the southernmost city in America. Uruguay is the birthplace of the Tango which is the traditional music and dance of Uruguay and Argentina.



GLOBAL RUGBY QUESTION



What year was the Uruguay national rugby team officially formed?



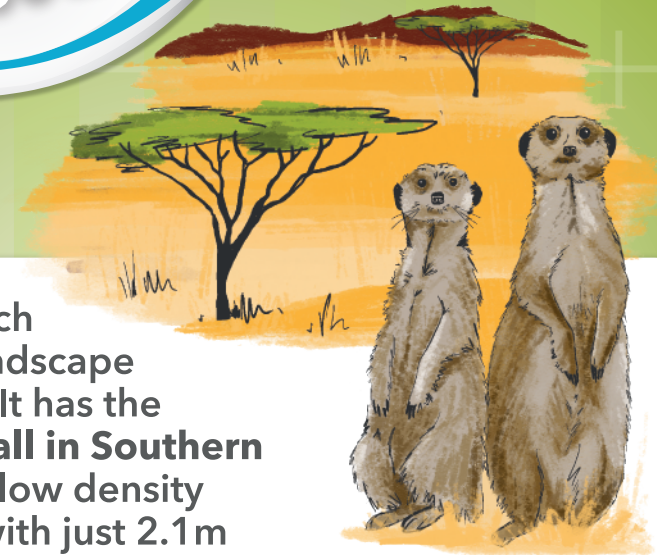
A

12

NAMIBIA



Namibia is rich in diverse landscape and wildlife. It has the lowest rainfall in Southern Africa and a low density population with just 2.1m citizens. The Kalahari Desert is the world's largest expanse of sand.



GLOBAL RUGBY QUESTION



What animal is the emblem of the Namibian national rugby team?

A

13



Xewani

Hallo

South Africa has **three capital cities**, Cape Town, Bloemfontein and Pretoria, and **11 official languages** including Zulu, Afrikaans, Xhosa & English.

Sawubona

Hello

Ndaa!

Dumela

Dumelang

Molo

Lotjhani

GLOBAL RUGBY QUESTION

What colours do the South African national rugby team typically play in?
The team are commonly known as the Springboks.



A

14



Georgia is a country between Eastern Europe and Western Asia. It has **12 climate zones**, ranging from desert to alpine mountains.

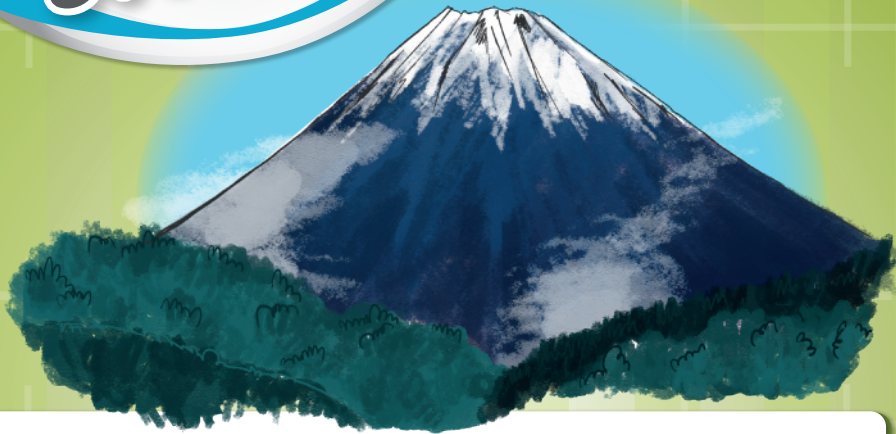
GLOBAL RUGBY QUESTION

The emblem for the Georgian rugby team is the Borjghali, what does the Borjghali symbolise?



A

15



Mount Fuji is the **highest point** in Japan, which stands at 3,776 meters.

★  GLOBAL RUGBY QUESTION  ★

What fictional animal is the mascot of Japan's national rugby team?



A

16



Samoa is the **first country** to experience the new day thanks to its position closest to the west side of the International Date Line. Samoa is also the **first country** to celebrate the New Year.

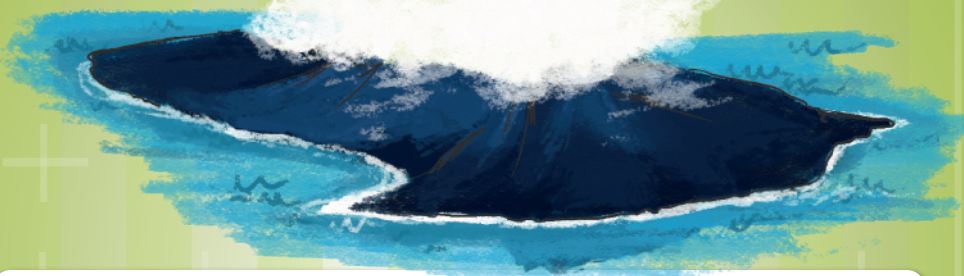
★  GLOBAL RUGBY QUESTION  ★

What is the nickname of Samoa's national rugby team?



A

17



Tonga has a **disappearing island**, Fonuafo'ou (New Island), which is a **submarine volcano** that has come and gone across history. It is currently in its "hidden" phase.



GLOBAL RUGBY QUESTION



True or False: Rugby Union is the national sport in Tonga?



18



Fiji is a collection of **333 tropical islands**, and only a third of them are inhabited by humans. **Who can work out how many islands are inhabited?**



GLOBAL RUGBY QUESTION



What is the name of the war dance performed by the Fiji rugby team before each International match?

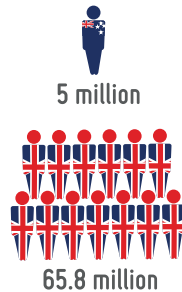


19

NEW ZEALAND



New Zealand as a whole has a **population of roughly 5 million people!** This is a small population compared to the UK which is roughly around the same size but has 65.8 million inhabitants.



GLOBAL RUGBY QUESTION

What is the name of the dance that The New Zealand All Blacks perform before every International match as a show of strength and unity?



A

20

AUSTRALIA



The Great Barrier Reef is a network of shallow rocks and marine plants off the coast of Australia. It is the **single largest ecosystem in the world.**



GLOBAL RUGBY QUESTION

What is the name of the official mascot of the Australian national rugby team, and what animal is it named after?



A